



Model FSW-48/11/PA Campfire Ring with swivel cooking grate.

(Below) Grate shown rotated out of the firering.



- **Cooking grate rotates 180 degrees from over the fire to completely out of the fire**
- **Handle is never over the fire**
- **Flanged firering for strength and safety**
- **Public use-type spring grips of coiled steel bar**
- **Large diameter ring for large groups of people**
- **Quality construction throughout**

SPECIFICATIONS:

- The cooking grate of the **FSW Series** firering is designed to rotate 180 degrees from a position over the fire, to a position completely out of the fire.
- Firering is constructed from 3/16" thick steel with a formed (NOT WELDED) 1" flanged lip around the top of the ring and ten 1" dia. drain/draft/anchor holes located around the perimeter.
- **Model FSW-48** firerings have an outside diameter of 48" (nom.) (indicated by "48" in model no., e.g. FSW-48/7/PA).
- **Model FSW-56** firerings have an outside diameter of 56-1/4" (nom.) (indicated by "56" in model no., e.g. FSW-56/7/PA).
- **Model FSW-48** (and **56**)/7/TB firering side height is 7-3/8" (indicated by "/7" in model no., e.g. FSW-48/7/PA).
- **Model FSW-48** (and **56**)/9/TB firering side height is 9" (indicated by "/9" in model no., e.g. FSW-48/9/PA).
- **Model FSW-48** (and **56**)/11/TB firering side height is 11-3/8" (indicated by "/11" in model no., e.g. FSW-48/11/PA).
- The single level, 300 sq. in. cooking grate is constructed from 1/2" dia. A-36 steel bars around the perimeter, 5/8" dia. A-36 steel bar for the handle, and 1/2" dia. A-36 steel bar for the grate bars. Grate bars are welded on both sides.
- Grate is provided with a substantially constructed spring grip suitable for public use made from 1/8" x 1/2" flat bar (not wire springs).
- Grate is mounted on a 2-3/8" OD tube allowing it to rotate on a horizontal plane out of the firering. Two welded-on stops limit rotation to 180° to prevent the handle entering the area over the fire. Minimal force is required to move grate.
- Ring is provided with anchoring devices to secure the ring in place. Four 1/2" dia. steel "U" anchor pins with deformed ends insert 15" into concrete footings (indicated by "/PA" in model no., e.g. FSW-48/7/PA).
- Entire unit is finished in high temperature, heat resistant, nontoxic black enamel paint.
- **Optional:** Firering is provided with a 3/16" x 7-1/8" x 9-5/8" steel plate utility shelf. (Add "/S" to model no., e.g. FSW-48/7/PA/S.)

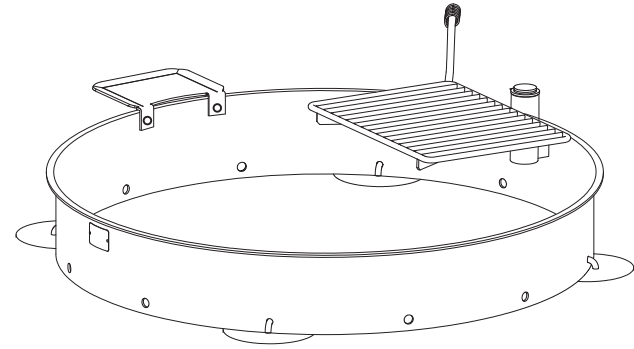
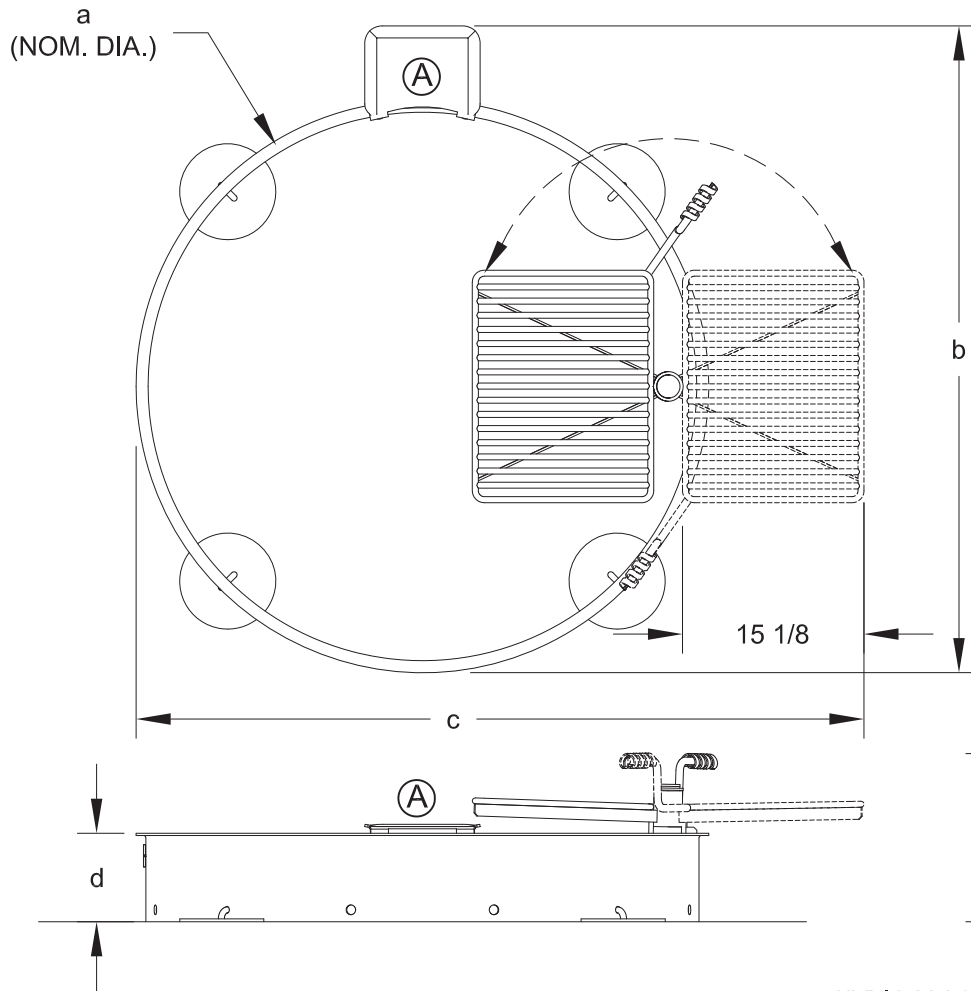
AVAILABLE OPTIONS

Utility Shelf

RJ Thomas Mfg. Co., Inc.

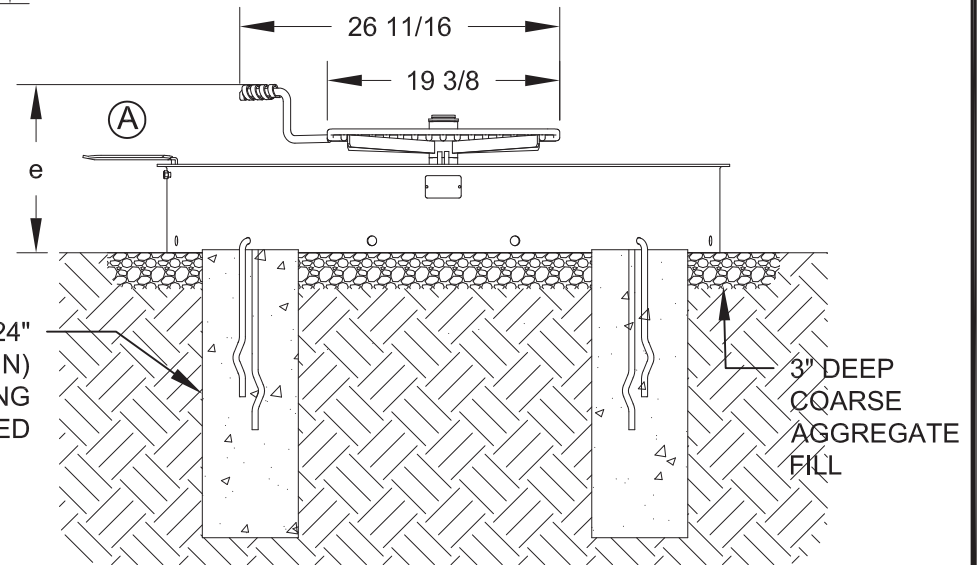
PO Box 946 • Cherokee, IA 51012-0946 • PH: 712-225-5115 • 800-762-5002 • FAX: 712-225-5796
E-mail: pilotrock@rjthomas.com • Web Site: <http://www.pilotrock.com>

© 2008 RJ Thomas Mfg. Co., Inc. PILOT ROCK® Park Products is a registered trademark of RJ Thomas Mfg. Co., Inc.



MODEL NUMBER	DIMENSION				
	a	b	c	d	e
FSW-48/7/PA	48	53 7/8	60 5/8	7 3/8	13 7/8
FSW-48/9/PA				9	15 1/2
FSW-48/11/PA				11 3/8	17 7/8
FSW-56/7/PA	56 1/4	62 1/8	68 7/8	7 3/8	13 7/8
FSW-56/9/PA				9	15 1/2
FSW-56/11/PA				11 3/8	17 7/8

(A) OPTIONAL UTILITY SHELF - ADD /S TO MODEL NUMBER



ALL DIMENSIONS IN INCHES

RJThomas Mfg. Co., Inc.
P.O. Box 946 • Cherokee, IA 51012-0946

DRAWN BY
WWM

TITLE FSW-48 AND FSW-56 SERIES CAMPFIRE RINGS WITH SWIVEL COOKING GRATE AND PIN ANCHORS; SIX MODELS WITH 3 SIDE HEIGHTS

DATE 07-23-14

DWG. NO. **AI-2060**