



*Model FX-30/18/PA Campfire Ring only- No Grate*

- **Flanged firering for strength and safety**
- **Elevated firebed conforms to ADA guidelines**
- **Required aggregate fill protects site surfaces such as paver blocks, cement, and asphalt from heat damage**
- **Quality construction throughout**

## **SPECIFICATIONS:**

- **Model FX-30/18/PA** firering side height is 17-3/8" high.
  - 32" overall dia. firering is constructed from 3/16" thick steel with a formed (NOT WELDED) 1" flanged lip around the top of the ring and ten 1" dia. drain/draft/anchor holes located around the perimeter.
  - Firering is designed to be filled with customer supplied aggregate fill to a level above ground level to raise fire to proper height and protect hard surfaces from heat damage. Model FX-30/18/PA requires 9" of fill. These levels conform with ADA guidelines of a minimum of 9" of fill above ground level.
  - Unit is provided with three 1/2" dia. anchor pins for concrete embedment (indicated by /PA in model no., e.g. FX-30/18/PA).
  - Entire unit is finished in high temperature, heat resistant, nontoxic black enamel.
  - **Optional:** Firering is provided with a 3/16" x 7-1/8" x 9-5/8" steel plate utility shelf. (Add /S to model no., e.g. FX-30/18/PA/S.)
  - **Optional:** Firering is provided with an 8" high heat shield constructed from 10 ga. steel welded on to new firerings. Heat shield provides a 7/8" cooling air gap around the area of the firering exposed to the fire (Add /H to model no., e.g. FX-30/18/PA/H).
- Note:** The optional utility shelf fits both firering and optional heat shield. (When ordering both options, add /H/S to model no., e.g. FX-30/18/PA/H/S.)
- **Optional:** Model DIG-U2 is a drop-in cooking grate with welded fabrication of 1/8" thick steel plate and 1/8" x 1-1/4" x 1-1/4" steel angle for the body and 1/2" dia. solid steel grate bars, 1/2" dia. solid steel drop-down handle bars; finished in high temp non-toxic Black Enamel paint.
  - **Optional:** Model CFX-30 firering cover, 16 Ga. pre-galvanized steel with 1/2" formed lip around the outside edge, (2) pre-galvanized handles, and a pre-drilled hole for a chain or cable kit (not included).

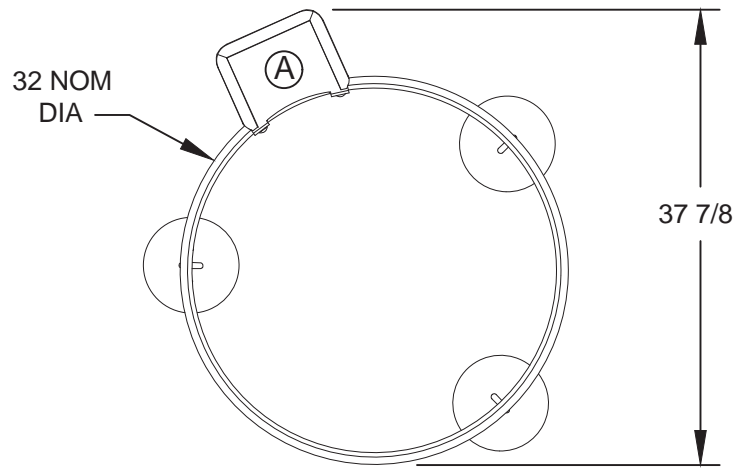
## **AVAILABLE OPTIONS**

- **Drop-in Cooking Grate**
- **Utility Shelf**
- **Heat Shield**
- **Snuffer Cover**

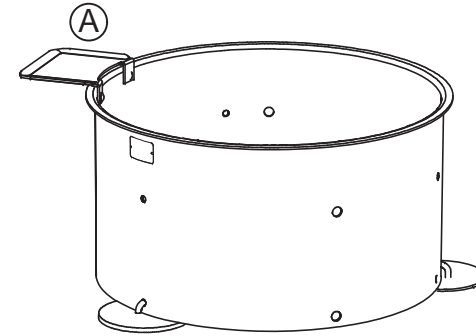
**RJ Thomas Mfg. Co., Inc.**

PO Box 946 • Cherokee, IA 51012-0946 • PH: 712-225-5115 • 800-762-5002 • FAX: 712-225-5796  
E-mail: [pilotrock@rjthomas.com](mailto:pilotrock@rjthomas.com) • Web Site: <http://www.pilotrock.com>

© 2017 RJ Thomas Mfg. Co., Inc. PILOT ROCK® Park Products is a registered trademark of RJ Thomas Mfg. Co., Inc.

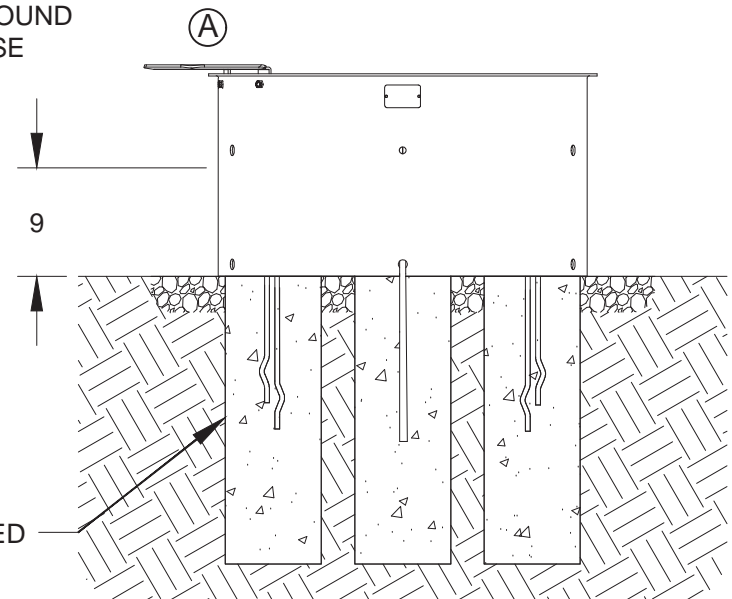
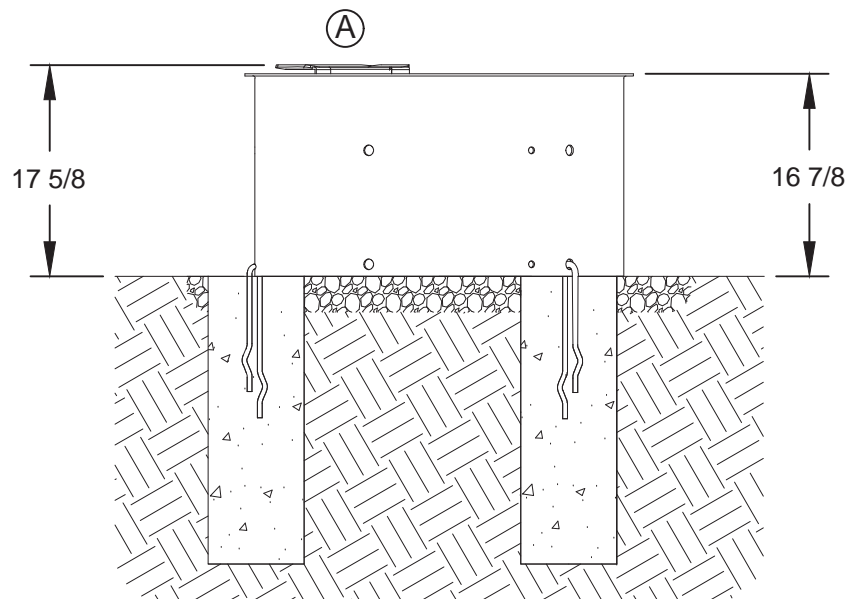


MODEL  
FX-30/18/PA/S



(A) OPTIONAL UTILITY SHELF  
- ADD /S TO MODEL NUMBER

FILL TO RECOMMENDED  
HEIGHT ABOVE GROUND  
LEVEL WITH COARSE  
AGGREGATE FILL  
(CONFORMS TO  
ADA GUIDELINES  
OF MIN 9" HEIGHT  
ABOVE GROUND  
FOR FIRE BASE)



ALL DIMENSIONS IN INCHES

**RJThomas Mfg. Co., Inc.**  
P.O. Box 946 • Cherokee, IA 51012-0946

DRAWN BY  
**MFI**

TITLE **FX-30/18/PA SERIES CAMPFIRE RING WITH NO GRATE AND PIN ANCHORS -SHOWN  
WITH OPTIONAL UTILITY SHELF**

DATE **10-7-15**

DWG. NO. **AI-2073**