

Model Q3-2460 B8 Large Group Multilevel Grill



Model Q3-2460 B8 Large Group Multilevel Grill

- **Four cooking height levels with grate adjustment in slots die-cut from the steel sides of grill box**
- **Grate flips up for easy cleaning and fire building**
- **Firebox is reinforced with flares die-formed into front edges of side panels**
- **Integral ash retainer flange combats heat warpage and prevents ashes from falling from the firebox**
- **Reinforced bottom prevents heat warpage**
- **Theft-proof base attachment**
- **Full 360° rotation for draft control**
- **Public use-type grips of coiled steel bar**

SPECIFICATIONS:

- **Model Q3-2460 B8** has a single 1220 sq. in. grate equally divided by three cooking chambers. Grate is supported by the two end panels and two divider panels. Cooking height adjusts to 4 levels between 3-1/2" and 8-3/4" above the firebox by means of die-cut slots in side panels. Front slots allow grate to tip up for easy cleaning and fire building.
- A 60" x 24" x 10" high firebox and swivel mechanism is constructed entirely of 3/16" plate steel. Integral ash flanges are die-formed into front edge to retain ashes and provide reinforcement. Panel reinforcing flares are die-formed into the front edges of both side panels and top of rear panel. Firebox is rib reinforced with 3/16" bar stock on the underside to prevent heat warpage. All exposed corners are rounded to 1-1/2" radius and all edge connections are entirely welded. Allowance for drainage shall be provided.
- Grate is constructed from 5/8" dia. A-36 steel bars for support handles and 1/2" dia. A-36 steel bars spaced 1-1/8" on centers to provide the grate surface and is permanently attached to firebox.
- Grate is provided with two substantially constructed coil grips on each end outside of firebox suitable for public use made from 1/8" x 1/2" steel flat bar (not wire springs).
- Grill is permanently attached after base installation by means of absolutely theft-proof base attachment allowing continuous 360° rotation of grill in either direction.
- **Standard:** Grill is supported by a 6" O.D. heavy wall steel pipe with a welded 3/8" x 10" x 10" base plate with four 25/32" dia. holes for permanent installation in concrete footing (indicated by "B8" in model no., e.g. Q3-2460 B8). Includes four 1/2" x 6" J-bolt anchors for concrete footing installation.
- Entire unit is finished in high temperature, heat resistant, nontoxic black enamel.
- **Optional:** Grill is supported by a 6" O.D. heavy wall steel pipe 40" long designed to be embedded 14" into a concrete footing (specify by replacing "B8" in model no. with "B16" in model no., e.g. Q3-2460 B16).
- **Optional:** Grill is provided with a 10-5/8" x 59" utility shelf made of formed 7 ga. steel. To order, add S7 to model no., e.g. Q3-2460/S B8.

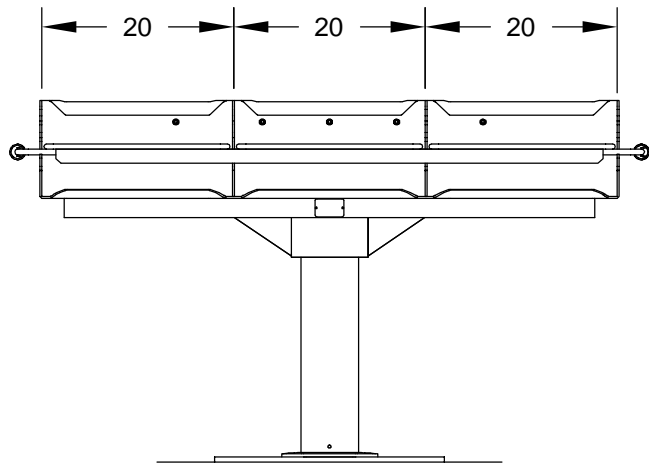
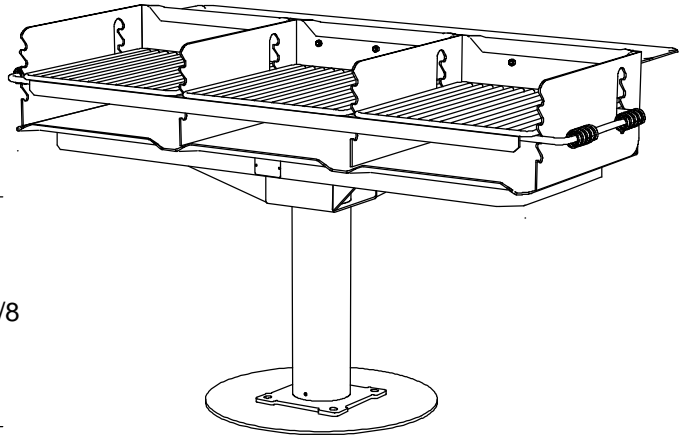
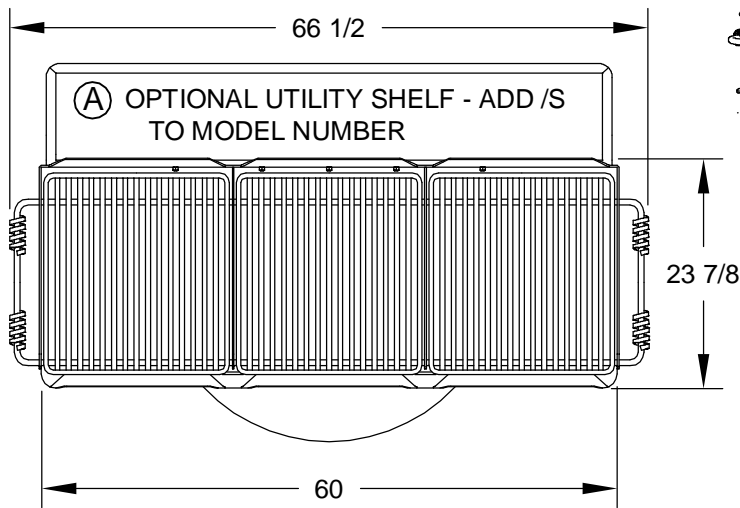
AVAILABLE OPTIONS

Embedded Post Base
Utility Shelf

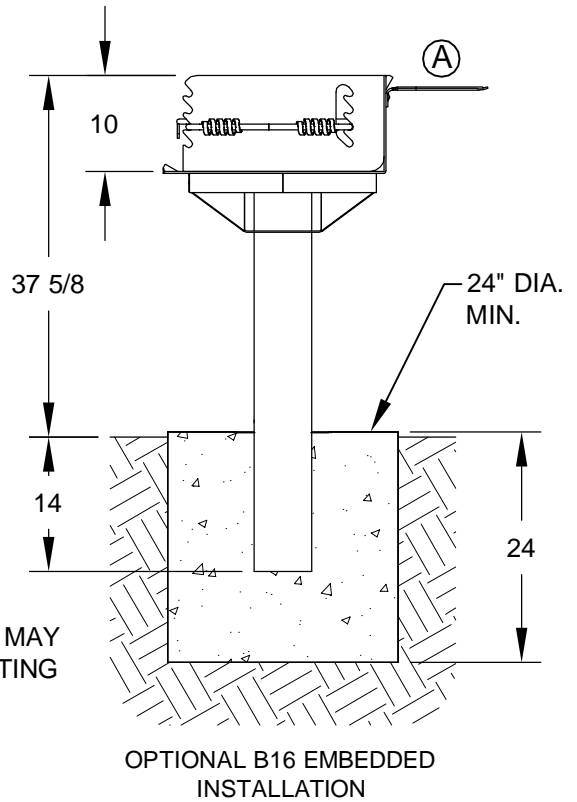
RJ Thomas Mfg. Co., Inc.

PO Box 946 • Cherokee, IA 51012-0946 • PH: 712-225-5115 • 800-762-5002 • FAX: 712-225-5796
E-mail: pilotrock@rjthomas.com • Web Site: <http://www.pilotrock.com>

© 2012 RJ Thomas Mfg. Co., Inc. PILOT ROCK® Park Products is a registered trademark of RJ Thomas Mfg. Co., Inc.



B8 SURFACE MOUNT
INSTALLATION



NOTE:
LOCAL SOIL CONDITIONS MAY
REQUIRE A LARGER FOOTING

ALL DIMENSIONS IN INCHES

RJThomas
Mfg. Co., Inc.
P.O. Box 946
Cherokee, IA 51012

TITLE **MODEL Q3-2460 LARGE GROUP PARK GRILL WITH B8 BASE
SHOWN WITH OPTIONAL MODEL S7 UTILITY SHELF**

DRAWN BY	WWM
DATE	2-24-12
DWG. NO.	AI-1826