



**Model FSWDW/SL-30/18/TB** Wheelchair Accessible Double Wall Campfire Ring with snow load rated swivel cooking grate.

(Below) Grate shown rotated out of the firering.



- **Cooking grate withstands snow loads of over 569 lbs./sq. ft.**
- **Meets ADA guidelines, requires less than five pounds of force with one hand to move grate out of firering**
- **Handle is never over the fire**
- **Flanged outer firering for strength and safety**
- **Cooling air gap between rings keeps outer ring cool**
- **Inner ring supports fire grate**
- **Tip back anchors allow easier removal of ashes**
- **Elevated cooking grate and firebed conform to ADA guidelines**
- **Required aggregate fill protects site surfaces such as paver blocks, cement, and asphalt from heat damage**

#### **SPECIFICATIONS:**

- Our new Swivel Grate firering design is tested to withstand snow loads of over **569 lbs. per sq. ft.** on the grate. The swivel grate is laser cut from 1/4-inch thick steel plate. A special 10 ga. channel brace is welded inside the ring to reinforce the swivel tube.
- **Model FSWDW/SL-30/18/TB** has a 32-3/8" overall dia. outer ring constructed from 12 ga. steel with a formed (NOT WELDED) 1" flanged lip at top of ring and ten 7/8" dia. draft holes located around the perimeter. Firering side is 17-5/16" tall. Ring is provided with hinged anchoring device to allow ring to tip upward for cleaning. Two 1/2" dia. steel "U" anchor pins with deformed ends insert 15" into concrete footings.
- Inner fire wall is constructed from 7 ga. steel formed in a nominal 26" dia. ring welded to outer ring by means of three 2-7/8" x 2-7/8", full length steel angles. Ten 7/8" dia. draft holes are provided in the 17-1/8" tall inner wall.
- The Swivel Grate design meets the ADA guidelines for one hand operation and requires less than 5 lbs. of force to move. The 300 sq. in. single level grate will move 180° – from over the fire to completely out of the fire ring – for easy fire building and serving. The handle is never over the fire.
- Grate is provided with a substantially constructed spring grip suitable for public use made from 1/8" x 1/2" flat bar (not wire springs).
- Grate is mounted on a 2-3/8" OD tube allowing it to rotate on a horizontal plane out of the firering. Two welded-on stops limit rotation to 180° to prevent the handle entering the area over the fire.
- Firering is designed to be filled with customer supplied aggregate fill to a minimum of 9" above ground level to conform with ADA guidelines to raise fire to proper height. Fill also protects hard surfaces from heat damage.
- 380 sq. in. log grate area is constructed from 5/8" dia. A-36 steel bar around the perimeter and 1/2" dia. A-36 steel bar for the grate bars. Grate is permanently attached and hinged by means of 2 tightly formed eyelets made from 5/8" dia. A-36 steel bar at one end and supported by two 1-3/4" x 1-9/16" 7 ga. die-formed angles. Grate swings up for cleanout.
- Entire unit is finished in high temperature, heat resistant, nontoxic black enamel paint.
- **Optional:** Firering is provided with a 3/16" x 7-1/8" x 9-5/8" steel plate utility shelf. (Add **"/S"** to model no., e.g. FSWDW/SL-30/18/TB/S.)

#### **AVAILABLE OPTIONS**

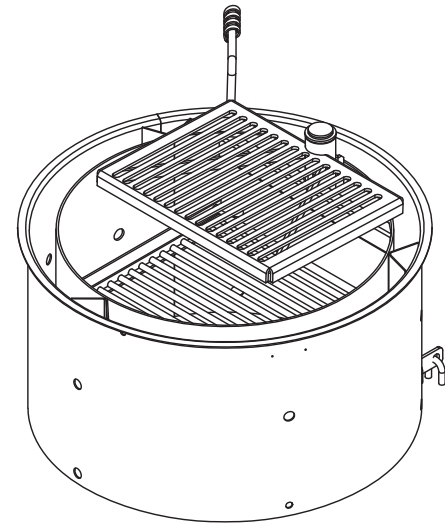
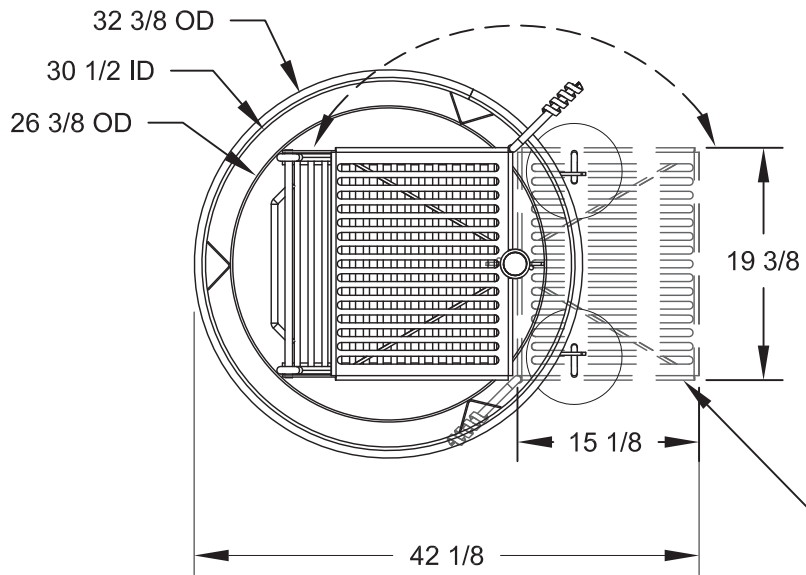
**Utility Shelf**

**RJ Thomas Mfg. Co., Inc.**

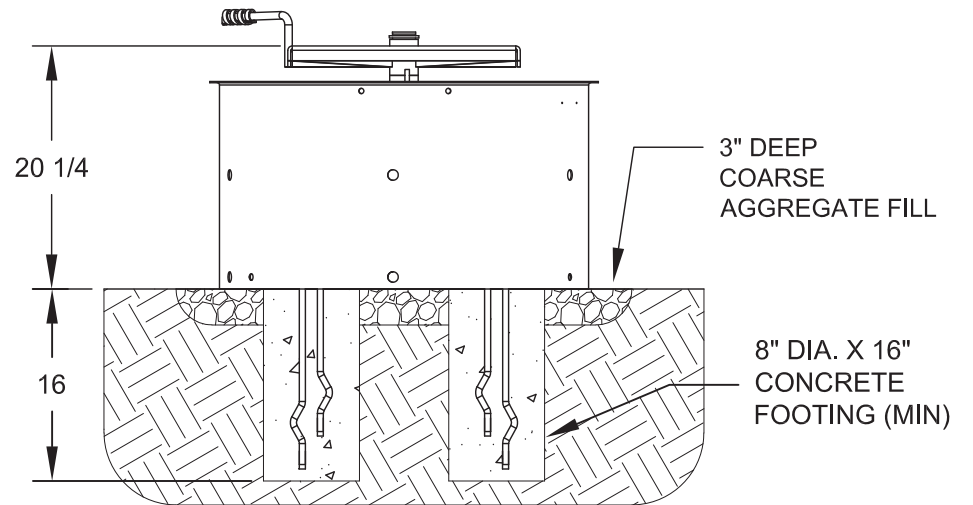
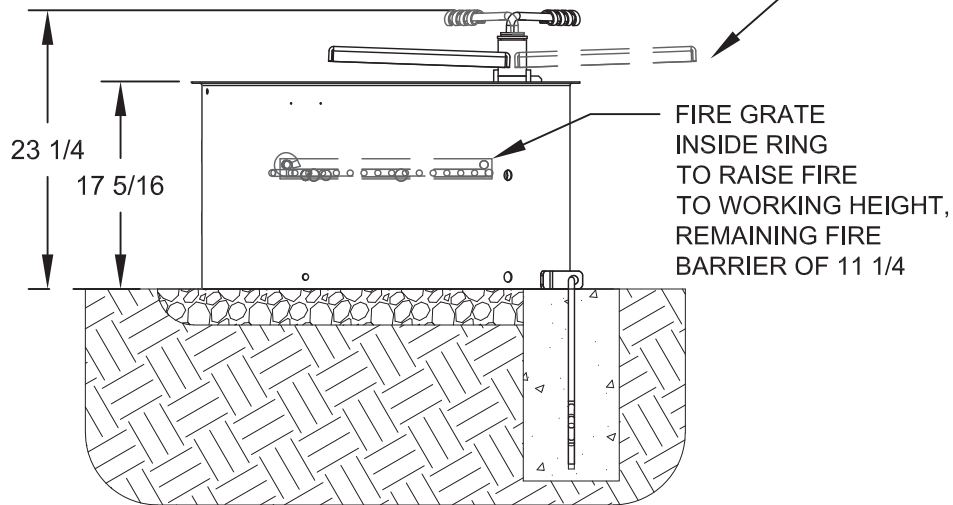
PO Box 946 • Cherokee, IA 51012-0946 • PH: 712-225-5115 • 800-762-5002 • FAX: 712-225-5796

E-mail: [pilotrock@rjthomas.com](mailto:pilotrock@rjthomas.com) • Web Site: <https://www.pilotrock.com>

© 2023 RJ Thomas Mfg. Co., Inc. PILOT ROCK® Park Products is a registered trademark of RJ Thomas Mfg. Co., Inc.



COOKING GRATE ROTATES  
180 DEGREES TO OUTSIDE  
OF FIRERING



ALL DIMENSIONS IN INCHES

**RJThomas Mfg. Co., Inc.**  
P.O. Box 946 • Cherokee, IA 51012-0946

DRAWN BY  
**JGJ**

TITLE MODEL FSWDW/SL-30/18/TB WHEELCHAIR ACCESSIBLE DOUBLE WALL FIRERING  
WITH SNOW LOAD RATED SWIVEL GRATE AND TIP BACK ANCHORS

DATE 06-27-23

DWG. NO. **AI-3051**