



*Model APT/G-6SC/TU 6 ft. Rectangular Embedded Mount  
Table with hot dip galvanized frames and blue  
thermo-plastic coated steel channel top and seats*

- **Permanent embedded mounting**
- **Nontrip, walk-through design**
- **Sturdy 3" x 6" rectangular steel tube pedestals**
- **Frames are hot-dip galvanized after fabrication for superior corrosion resistance**
- **Thermo-plastic Coating heat fused to Steel Channel Top and Seats for durability**
- **Thermo-plastic Coating formulated with U.V. stabilizers for ultraviolet protection**
- **Eight foot model can easily be installed to be handicap accessible**
- **Quality construction throughout**

#### **AVAILABLE OPTIONS**

**6' or 8' lengths**

**Choice of colors of Powder Coated finish for steel frame components**

**Choice of colors of Thermo-plastic Coated Expanded Steel**

**Surface mount base plate**

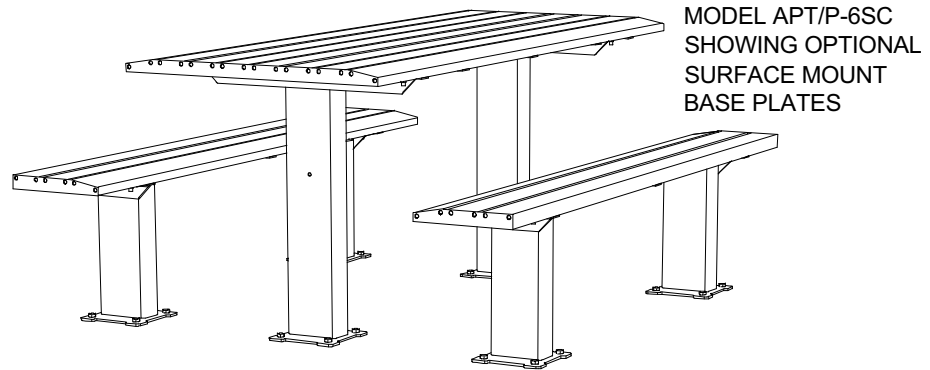
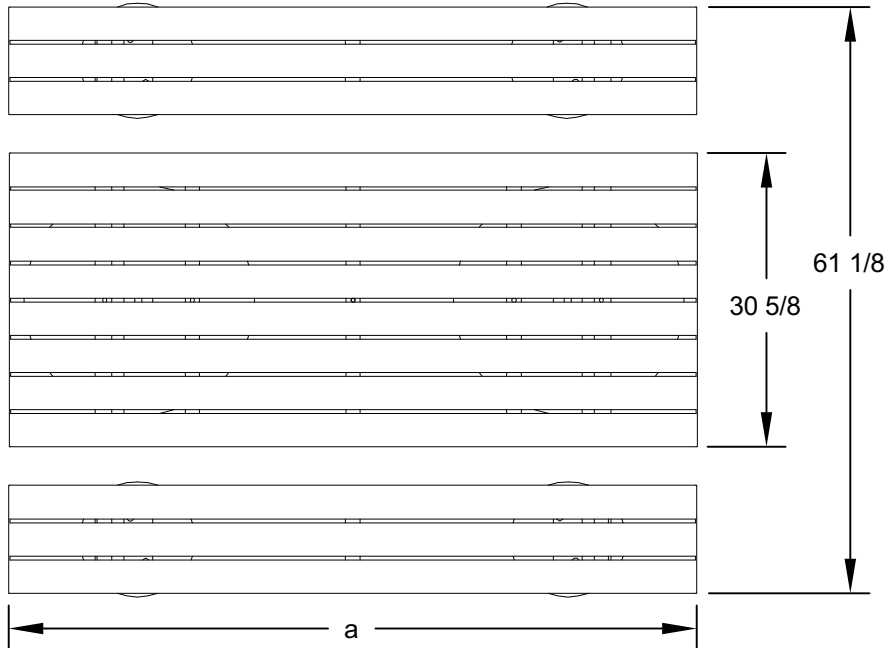
#### **SPECIFICATIONS:**

- **APT Series** Table top and seat end frames are one-piece welded construction, fabricated from 3" x 6" x 1/8" wall rectangular structural steel tubing with 2" x 2" x 3/16" A-36 structural grade steel angle for attaching the seats and tops. Exposed ends of rectangular tubing are permanently sealed with welded-on steel end caps. Frames are designed to be embedded in a concrete footing.
- Model **APT/G-6** has a nominal length of 72".
- Model **APT/G-8** has a nominal length of 96".
- Nominal table height is 32". Nominal seat height is 18".
- **Standard:** All frame components are hot-dip galvanized after fabrication to ASTM-A123 to maintain an average zinc coating of 2.0 oz. per sq. ft. of surface area (indicated by "/G" in model no., e.g. APT/G-6SC/TW).
- Steel channel top and seats are each a one-piece welded construction, fabricated from 16 ga. steel plate formed to nominal dimensions of 2" x 4" lumber, with 10 ga. bracing (indicated by "SC" in model no., e.g. APT/G-6SC/TW). Structure includes all mounting holes for assembly of table.
- **Standard:** All steel surfaces of the top and seats are covered with a thermo-plastic coating in a Brown color (indicated by "/TW" in model no., e.g. APT/G-6SC/TW). The UV-stabilized thermo-plastic coating is applied in a multi step process of material preparation and finish application designed to permanently heat fuse and bond the finish to the steel. The thermo-plastic polyethylene finish is impact resistant, does not support mold or mildew, and the textured matte surface is less susceptible to marring and scuffing.
- All fasteners are provided for assembly.
- **Optional:** Color choices of thermo-plastic coated steel components. For optional colors choices see Specification Bulletin #SPC-CO-001.
- **Optional:** Color choices of powder coated steel frame components. For optional colors choices see Specification Bulletin #SPC-CO-001.
- **Optional:** Frames are provided with a 3/8" x 8" x 8" steel base plates to bolt table and seat posts to existing concrete pad. To specify add "/P" after the "APT" in the model no., e.g. APT/P/G-6SC/TW. (Anchor bolts not included.)
- **Accessible Option:** Model APT-8 can be made handicap accessible by mounting table top frame pedestals closer to center of table.

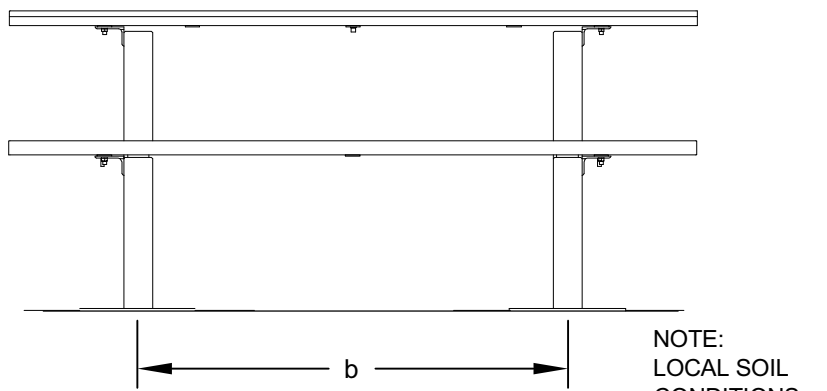
**RJ Thomas Mfg. Co., Inc.**

PO Box 946 • Cherokee, IA 51012-0946 • PH: 712-225-5115 • 800-762-5002 • FAX: 712-225-5796  
E-mail: pilotrock@rjthomas.com • Web Site: <http://www.pilotrock.com>

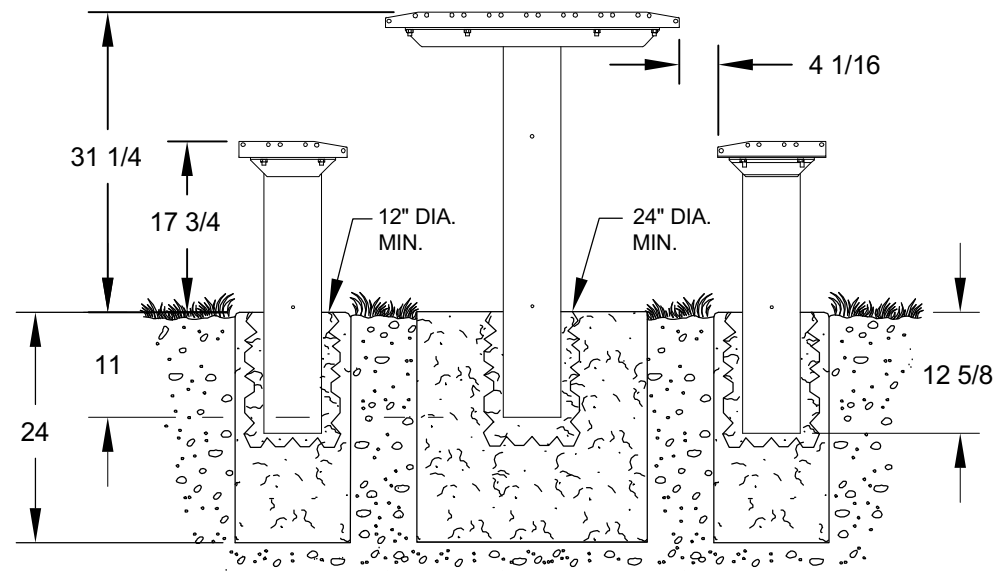
© 2012 RJ Thomas Mfg. Co., Inc. PILOT ROCK® Park Products is a registered trademark of RJ Thomas Mfg. Co., Inc.



| MODEL NUMBER | DIMENSION |        | * NOTE: APT-8 Table can be made handicap accessible by attaching each table top frame pedestal to table top angles closer to center of table to create Knee/Toe Clearance meeting current ADA guidelines. |
|--------------|-----------|--------|---|
|              | a         | b      |   |
| APT-6        | 72        | 44-3/4 |   |
| APT-8        | 96        | 63*    |   |



NOTE:  
LOCAL SOIL  
CONDITIONS  
MAY REQUIRE  
A LARGER  
FOOTING  
(CHECK LOCAL  
CODES)



ALL DIMENSIONS IN INCHES

|  |                        |  |                  |
|--|------------------------|--|------------------|
| <b>RJThomas Mfg. Co., Inc.</b><br>P.O. Box 946 • Cherokee, IA 51012-0946 | DRAWN BY<br><b>WWM</b> | TITLE APT SERIES 6 AND 8 FOOT EMBEDDED MOUNT RECTANGULAR<br>MULTI PEDESTAL TABLE WITH THERMO-PLASTIC COATED<br>STEEL CHANNEL TOP AND SEATS | DATE 7-23-12     |
|  |                        |  | DWG. NO. AI-2047 |