



Keystone Hardscapes Model FPI-D Optional Access Door

SPECIFICATION BULLETIN
#SPC-FR-087
REV. 04-20



Model FPI-D Black Carbon Steel Access Door with (2) vents

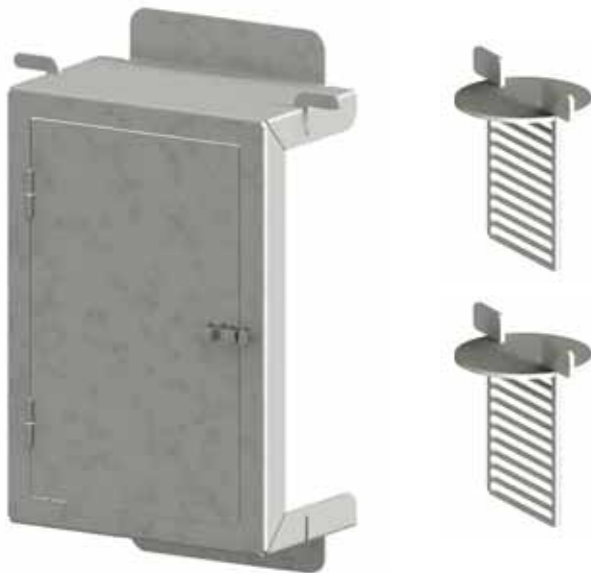
SPECIFICATIONS:

- The optional Access Door provides an opening on the side of a block structure to the inside for gas controls.
- Door opening (nom.): 12-3/4 in. wide x 20-1/4 in. tall. Door includes a slide latch.
- This Access Door option must be installed at the same time that the block structure is originally erected.
- Includes (2) 7" x 7" (nom.) vents per door package.

Two material options:

Model FPI-D: Access Door is fabricated using 10 ga. steel plate, vents are 7 ga. steel plate, dip painted with high heat non-toxic black enamel. Weight: 38 lbs.

Model FPI-D/S: Stainless Steel Access Door is fabricated using, 11 ga. stainless steel, vents are 7 ga. stainless steel, not painted. Weight: 35 lbs.



Model FPI-D Stainless Steel Access Door with (2) vents

Warning: This product can expose you to carbon monoxide which is a combustion by-product known to the State of California to cause birth defects or other reproductive harm.
For more information go to www.P65Warnings.ca.gov

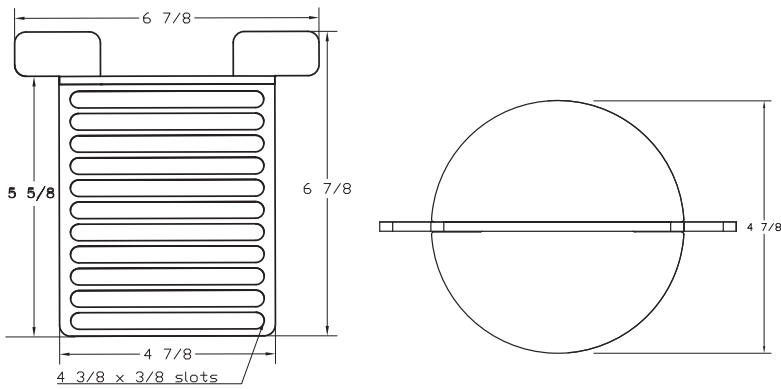
Rj Thomas Mfg. Co., Inc.

PO Box 946 · Cherokee, IA 51012-0946 · PH: 712-225-5115 · 800-762-5002 · FAX: 712-225-5796

E-mail: customerservice@rjthomas.com

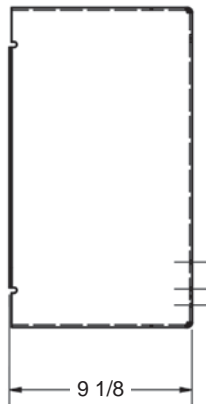
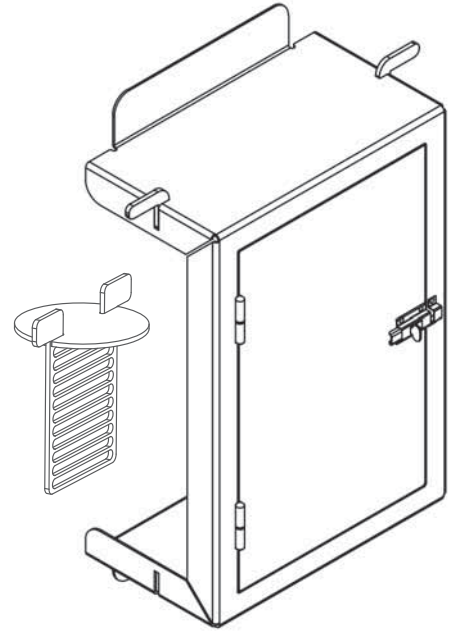
© 2020 Rj Thomas Mfg. Co., Inc.

Includes Two (2) Vents Per Door Package

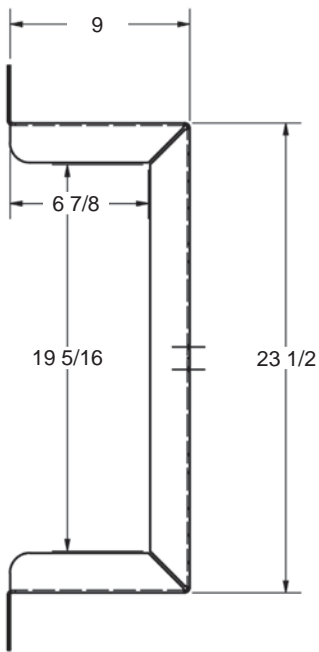


FRONT VIEW

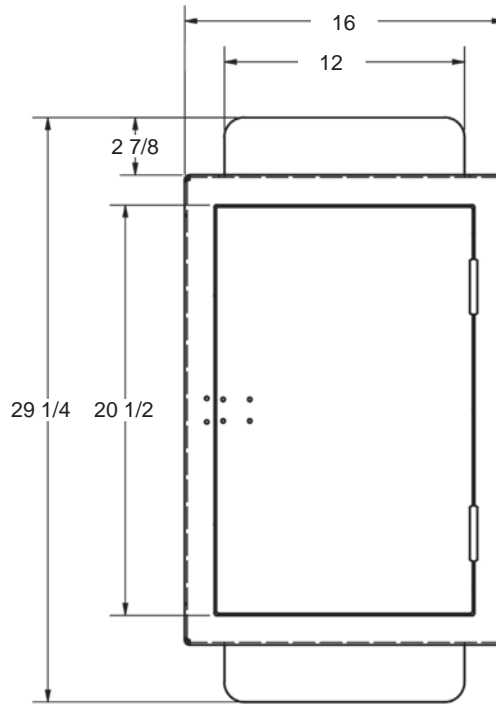
TOP VIEW



TOP VIEW



SIDE VIEW



FRONT VIEW

ALL DIMENSIONS IN INCHES

RJThomas
Mfg. Co., Inc.
 P.O. Box 946
 Cherokee, IA 51012

TITLE MODEL FPI-D Optional Access Door and Vents

DRAWN BY JGJ

DATE 10-09-19

DWG. NO. -