



**Model FSWS-30/18/PA** Wheelchair Accessible  
Campfire Ring with swivel cooking grate.

(Below) Grate shown rotated out of the firering.



- **Meets ADA guidelines, requires less than five pounds of force with one hand to move grate out of firering**
- **Handle is never over the fire**
- **Choose from two fire barrier heights**
- **Flanged firering for strength and safety**
- **Public use-type spring grips of coiled steel bar**
- **Elevated cooking grate and firebed conform to ADA guidelines**
- **Required aggregate fill protects site surfaces such as paver blocks, cement, and asphalt from heat damage**
- **Quality construction throughout**

## AVAILABLE OPTIONS

Utility Shelf

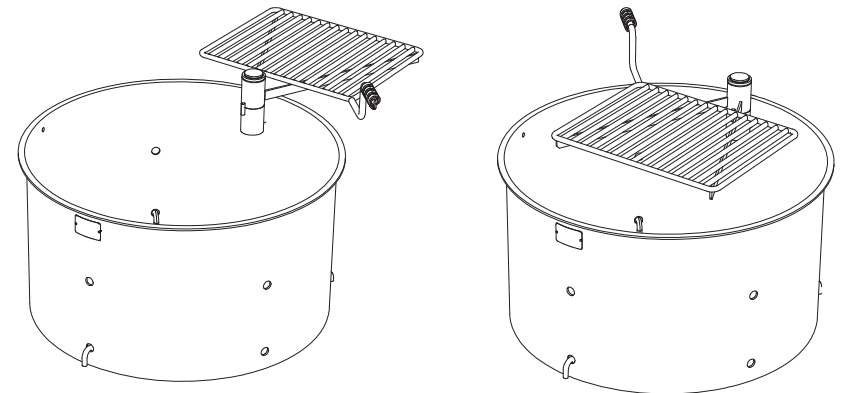
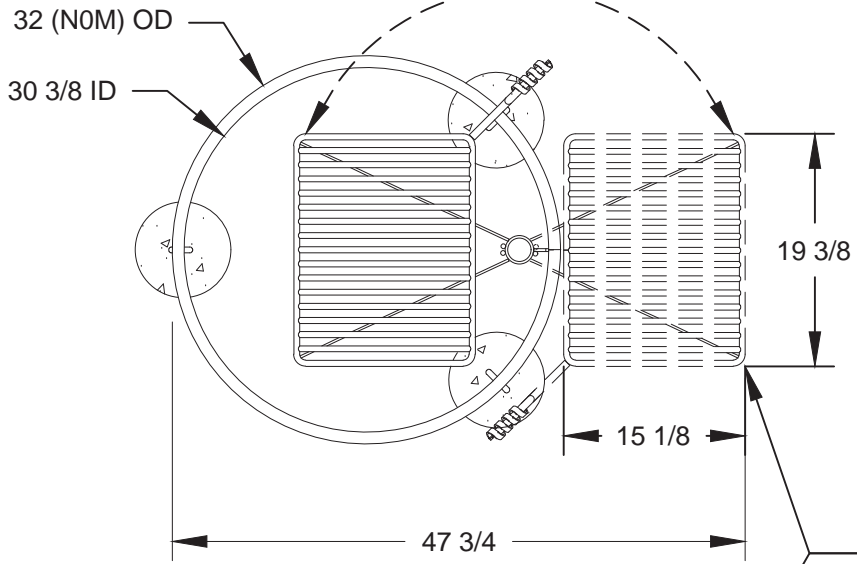
## SPECIFICATIONS:

- **FSWS Series** firering is designed to meet ADA guidelines requiring less than five pounds of force with one hand to operate the grate.
- 32" overall dia. firering is constructed from 11 ga. (1/8" thick) stainless steel with a formed (NOT WELDED) 1" flanged lip around the top of the ring and ten 1" dia. drain/draft/anchor holes located around the perimeter.
- **Model FSWS-30/18/PA** firering side height is 16-3/4".
- **Model FSWS-30/24/PA** firering side height is 23-1/4".
- The single level, 300 sq. in. cooking grate is constructed from 1/2" dia. A-36 steel bars around the perimeter, 5/8" dia. A-36 steel bar for the handle, and 1/2" dia. A-36 steel bar for the grate bars.
- Grate is provided with a substantially constructed spring grip suitable for public use made from 1/8" x 1/2" flat bar (not wire springs).
- Grate is mounted on a 2-3/8" OD tube allowing it to rotate on a horizontal plane out of the firering. Two welded-on stops limit rotation to 180° to prevent the handle entering the area over the fire. Installation of grate components is required by customer.
- Firering is designed to be filled with customer supplied aggregate fill to a minimum of 9" above ground level to conform with ADA guidelines to raise fire to proper height. Fill also protects hard surfaces from heat damage.
- Unit is provided with three 1/2" dia. anchor pins for concrete embedment (indicated by "/PA" in model no., e.g. FSWS-30/18/PA).
- Stainless steel ring is not painted. Swivel grate components are finished with high temp non-toxic black enamel paint.
- **Optional:** Firering is provided with a 3/16" x 7-1/8" x 9-5/8" black steel plate utility shelf. (Add "/S" to end of model no., e.g. FSWS-30/18/PA/S.)

**RJ Thomas Mfg. Co., Inc.**

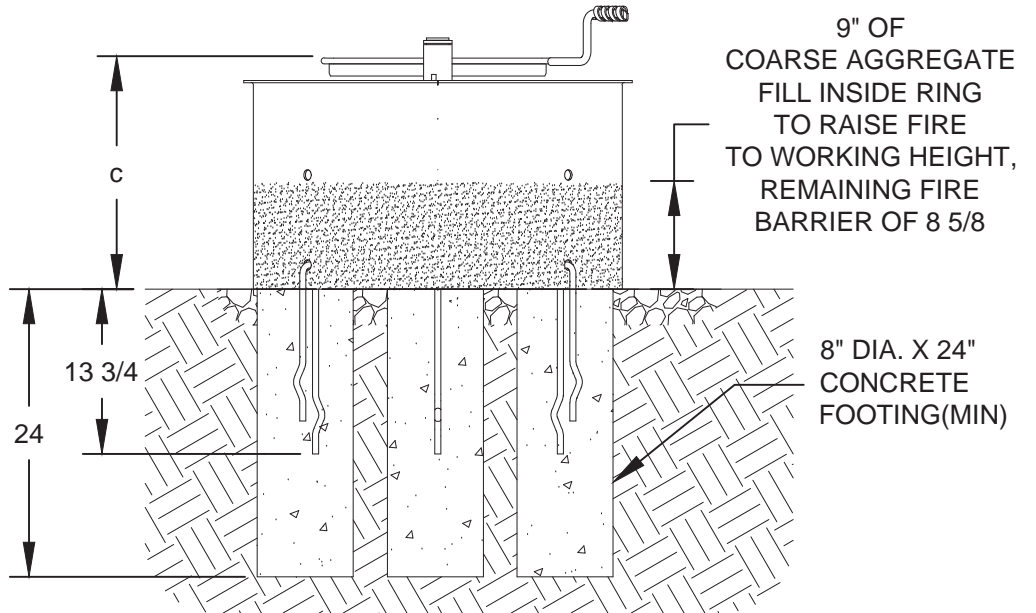
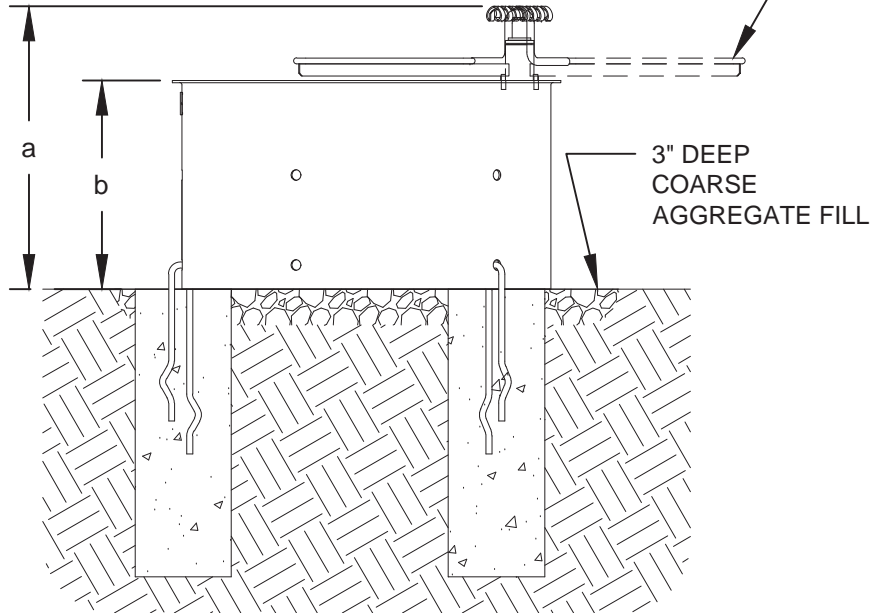
PO Box 946 • Cherokee, IA 51012-0946 • PH: 712-225-5115 • 800-762-5002 • FAX: 712-225-5796  
E-mail: pilotrock@rjthomas.com • Web Site: <http://www.pilotrock.com>

© 2017 RJ Thomas Mfg. Co., Inc. PILOT ROCK® Park Products is a registered trademark of RJ Thomas Mfg. Co., Inc.



GRATE ROTATES  
180 DEGREES  
TO OUTSIDE FIRERING

MODEL NUMBER	DIMENSION		
	a	b	c
FSWS-30/18	23 3/8	16 3/4	19 3/8
FSWS-30/24	29 7/8	23 1/4	26 1/8



ALL DIMENSIONS IN INCHES

**RJThomas Mfg. Co., Inc.**  
P.O. Box 946 • Cherokee, IA 51012-0946

DRAWN BY  
**MFI**

TITLE **FSWS SERIES MODELS FSWS-30/18/PA AND FSWS-30/24/PA STAINLESS STEEL ACCESSIBLE SWIVEL GRATE FIRE RING WITH PIN ANCHORS**

DATE **08-31-17**

DWG. NO. **AI-2080**