



Model FX-30/11/TB Campfire Ring only- No Grate.

- **Flanged firering for strength and safety**
- **No cooking grate**
- **Three fire barrier heights available**
- **Firering tips back for easy cleaning**
- **Tip-back anchors embedded in concrete footings provide permanent location**
- **“Bottomless” design installs without concrete pad**
- **Quality construction throughout**

SPECIFICATIONS:

- **Model FX-26/7/TB** is 26" overall dia. ring with a 7-3/8" high fire barrier formed from 3/16" steel with a 1" formed (NOT WELDED) flange around the top of the ring and 9/16" draft holes spaced around the bottom perimeter.
- **Model FX-30/7/TB** has a 7-3/8" high fire barrier. 32" overall dia. ring is constructed from 3/16" thick steel with a formed (NOT WELDED) 1" flanged lip around the top of the ring and 9/16" dia. draft holes spaced around the bottom perimeter.
- **Model FX-30/9/TB** has a 9" high fire barrier. 32" overall dia. ring is constructed from 3/16" thick steel with a formed (NOT WELDED) 1" flanged lip around the top of the ring and 1" dia. draft holes spaced around the bottom perimeter.
- **Model FX-30/11/TB** has an 11-3/8" high fire barrier. 32" overall dia. ring is constructed from 3/16" thick steel with a formed (NOT WELDED) 1" flanged lip around the top of the ring and 1" dia. draft holes spaced around the bottom perimeter.
- Ring is provided with hinged anchoring device to allow ring to tip upward for easy cleaning. Two 1/2" dia. steel “U” anchor pins with deformed ends insert 15" into concrete footings (indicated by /TB in model no., e.g. FX-30/7/TB).
- All units are finished in high temperature, heat resistant, nontoxic black enamel paint.
- **Optional:** Firerings shall be provided with a 3/16" x 7-1/8" x 9-5/8" steel plate utility shelf. (Add /S to model no., e.g. FX-30/7/TB/S.)
- **Optional:** Model DIG-U2 is a drop-in cooking grate with welded fabrication of 1/8" thick steel plate and 1/8" x 1-1/4" x 1-1/4" steel angle for the body and 1/2" dia. solid steel grate bars, 1/2" dia. solid steel drop-down handle bars; finished in high temp non-toxic Black Enamel paint.
- **Optional:** Model CFX-30 firering cover, 16 Ga. pre-galvanized steel with 1/2" formed lip around the outside edge, (2) pre-galvanized handles, and a pre-drilled hole for a chain or cable kit (not included).

AVAILABLE OPTIONS

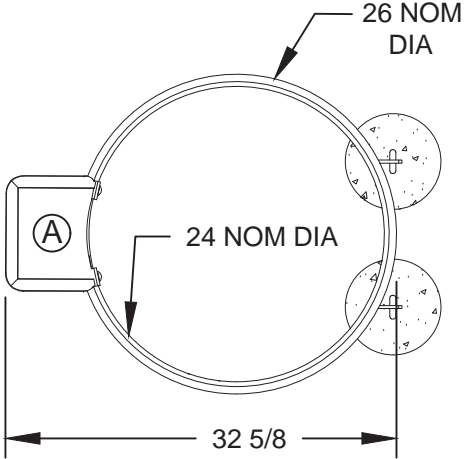
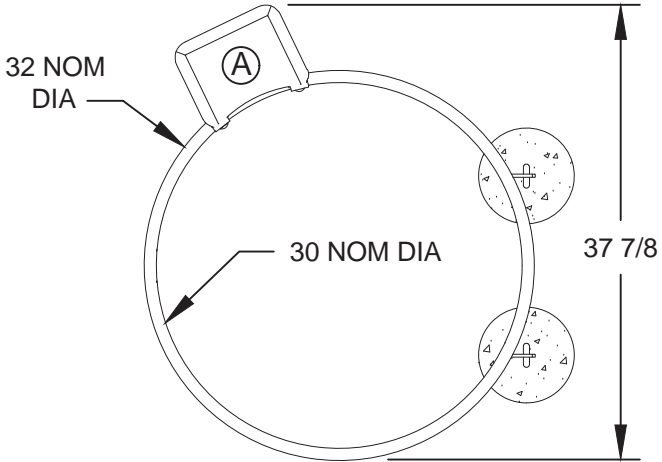
- **Drop-in cooking grate (only available for FX-30)**
- **Snuffer cover (only available for FX-30)**
- **Utility shelf**

RJ Thomas Mfg. Co., Inc.

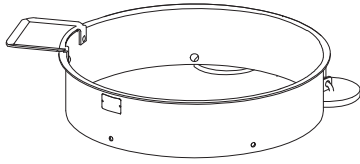
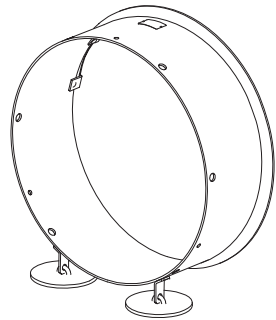
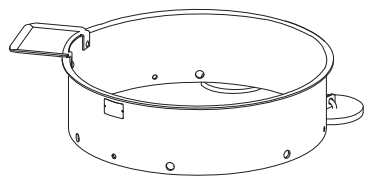
PO Box 946 • Cherokee, IA 51012-0946 • PH: 712-225-5115 • 800-762-5002 • FAX: 712-225-5796
E-mail: pilotrock@rjthomas.com • Web Site: <http://www.pilotrock.com>

© 2017 RJ Thomas Mfg. Co., Inc. PILOT ROCK® Park Products is a registered trademark of RJ Thomas Mfg. Co., Inc.

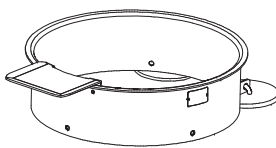
MODEL FX-30/11/TB - SHOWN IN TIP-BACK POSITION FOR CLEANING



MODEL FX-30/9/TB



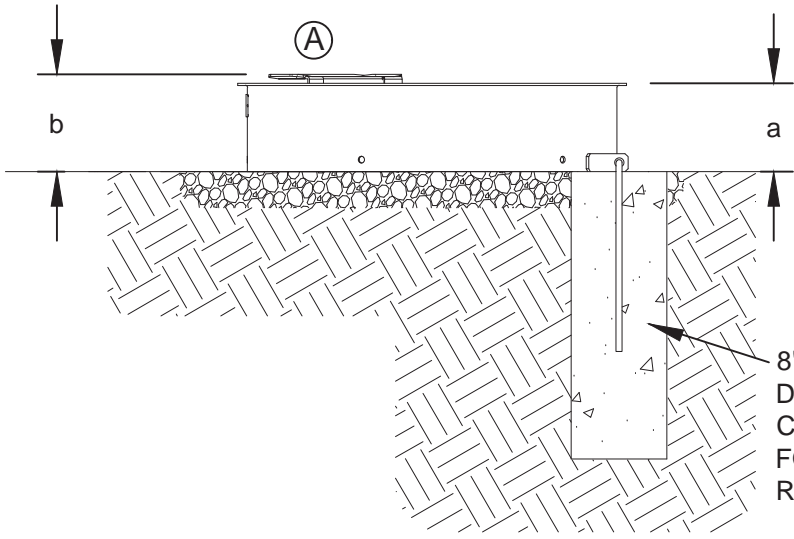
MODEL FX-30/7/TB/S



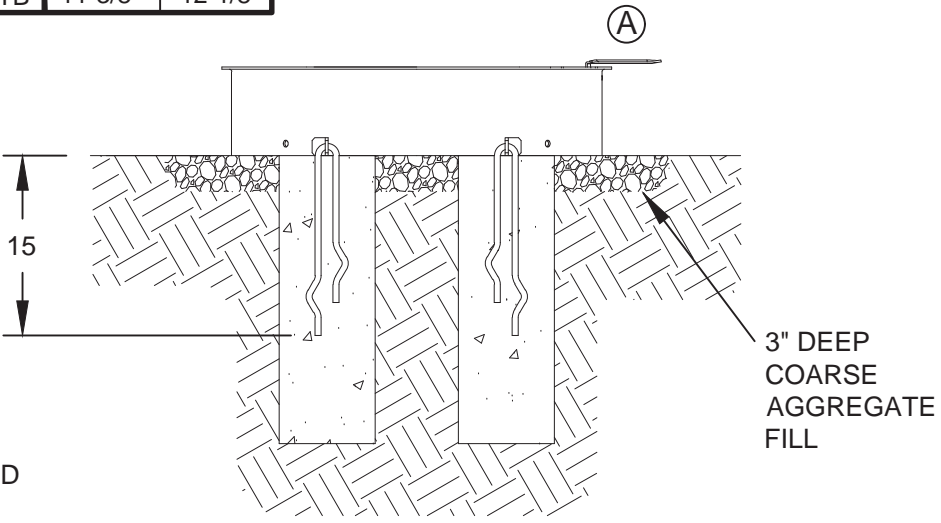
MODEL FX-26/7/TB/S

(A) OPTIONAL UTILITY SHELF - ADD /S TO MODEL NUMBER

MODEL NUMBER	DIMENSION	
	a	b
FX-26/7/TB	7-3/8	8-1/8
FX-30/7/TB	7-3/8	8-1/8
FX-30/9/TB	9	9-3/4
FX-30/11/TB	11-3/8	12-1/8



8" DIA x 24" DEEP (18" MIN) CONCRETE FOOTING RECOMMENDED



3" DEEP COARSE AGGREGATE FILL

ALL DIMENSIONS IN INCHES

RJThomas Mfg. Co., Inc.
P.O. Box 946 • Cherokee, IA 51012-0946

DRAWN BY
MFI

TITLE FX-26 and FX-30 SERIES TIP-BACK CAMPFIRE RINGS; NO GRATE; 3 FX-30 MODELS WITH 3 SIDE HEIGHTS SHOWN WITH OPTIONAL UTILITY SHELF

DATE 10-7-15

DWG. NO. AI-2072